

PdN Children's Annual Report FY2021



Finding Our New Normal - a Message from CEO Al Velarde



It has been more than two years since our world came to a crashing halt due to the COVID-19 Pandemic. Like all other organizations, PdN Children's faced monumental change when the world shut down. However, for children with special needs and in need of interventions to help them achieve their fullest potential, a global pandemic could not stop the services they need to thrive. We had to go from efficient operations without serious concerns to an operating model that protected everyone from the risk of catching a potentially deadly disease.

In March of 2020, the doors at PdN Children's were closed, and most operations had to be done remotely. We learned, overnight, how to conduct intervention services and manage operations by using computers from living rooms, kitchens, and bedrooms. There were two exceptions. Our Inclusive Early Learning Center, where we provide childcare and early childhood education, remained open to provide services for essential workers. Our Applied Behavioral Analysis (ABA) program also stayed open for children with autism simply because many of them could not be able to receive intervention services online.

The year 2020 passed, and we entered 2021. We began to implement some flexibilities, but we continued to deliver much of our work via computer. For those cases where we were live, both our providers and clients had to wear facemasks, maintain social distancing, endure intensive questioning about their personal health and other COVID protection protocols. In the late summer, we saw hope. COVID cases were going down significantly, people were free to go without masks, businesses were reopening, and we could feel a sense of normalcy. Then the Delta variant presented itself, and Omicron followed after that. Many of our employees contracted COVID-19. The CDC tightened its guidelines, and we were again operating with COVID safety as our top priority.

It appears that the latest variants are subsiding, and infections are dropping. We are continuing to operate with care and safety. We have seen a significant return of live, face-to-face services, but we continue to honor our client's requests to provide services online. We are again serving all families in our IELC and relaxing our strict protocols for parents.

We have found our new normal. We know the virus is still here and still poses a risk. Our staff will continue to offer services online, and all administrative personnel have the capacity to work from home when necessary efficiently. We remain ever vigilant of any resurgence of the virus, and we are prepared to adjust operations as necessary. We are flexible and can adjust at the drop of a dime, but we will never stop being there for the children who desperately need our services.

As CEO of the PdN Children's, I am proud of all the people who dedicate their lives to the service of children with special needs. I am incredibly proud of our organization, and I am happy to present our Annual Report.

Al Velarde

CEO - PdN Children's



BOARD OF DIRECTORS FY 2021



Monica Ramirez, O.D.
Board President
Buena Vista Eye Care



Mark Anchondo
Marathon Petroleum



Diana Valdez
Board President-Elect
Law Office of Diana Macias Valdez



Mateo Delgado
34th Judicial District Attorney's Office



Richard Martinez
Board Secretary
Retired Engineer



Elizabeth M. Dipp Metzger
Crown Wealth Strategies



Steve Kontoulis
Board Treasurer
BBVA Compass Bank



Stacey S. Hunt Spier
Community Volunteer



Rana N. Kronfol, M.D.
Immediate Past-President
El Paso Pediatric Associates



Britt L. Porter
FAB Private Wealth Management



Ralph Adame
Mexus Communications, LLC



Pam Teicher
Retired Educator



Zoe Tullius, M.D.
Neonatologist



PdN CHILDREN'S EXECUTIVE TEAM



Alfonso V. Velarde
Chief Executive Officer



Gilda Gil
Chief Operations Officer



Alba Lopez
Chief Financial Officer





Mission

It is the mission of PdN Children's that we help children with special needs achieve their fullest potential.

Vision

A world where all children thrive in an inclusive environment, recognized by their abilities and talents, rather than their differences.

Values

Acceptance & Appreciation, Being a Change Agent, Team-based & Customized Care, Ethical Roots, and Financial Stewardship

PDN PROGRAMS



EARLY CHILDHOOD INTERVENTION (ECI)



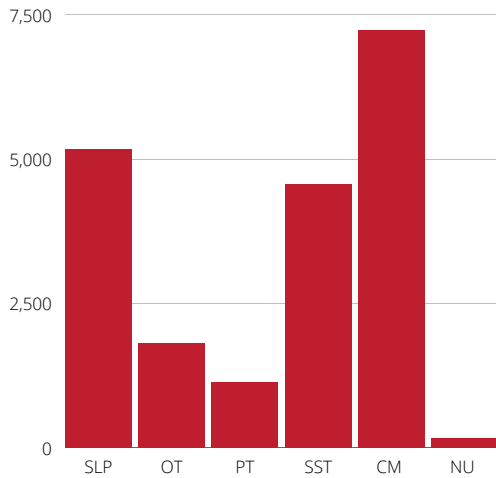
ECI services help children, ages birth up to age three, grow and learn. ECI staff listens to a family's concerns and works with them to plan services. Each family will have a different plan, according to what is needed for their child. Infants and toddlers learn best from families and caregivers through activities in their daily lives such as feeding, bathing, and playing. ECI professionals "coach" families on using daily activities to help their children develop skills.

ECI Services Available

- Case Management & Service Coordination
- Hearing & Vision
- Nutrition
- Occupational Therapy
- Physical Therapy
- Specialized Skills Training
- Speech Therapy



EARLY CHILDHOOD INTERVENTION (ECI)



- SLP - Speech Language
- OT - Occupational Therapy
- PT - Physical Therapy
- SST - Specialized Skills Therapy
- CM - Case Management
- NU - Nutrition

Types of Therapies Received

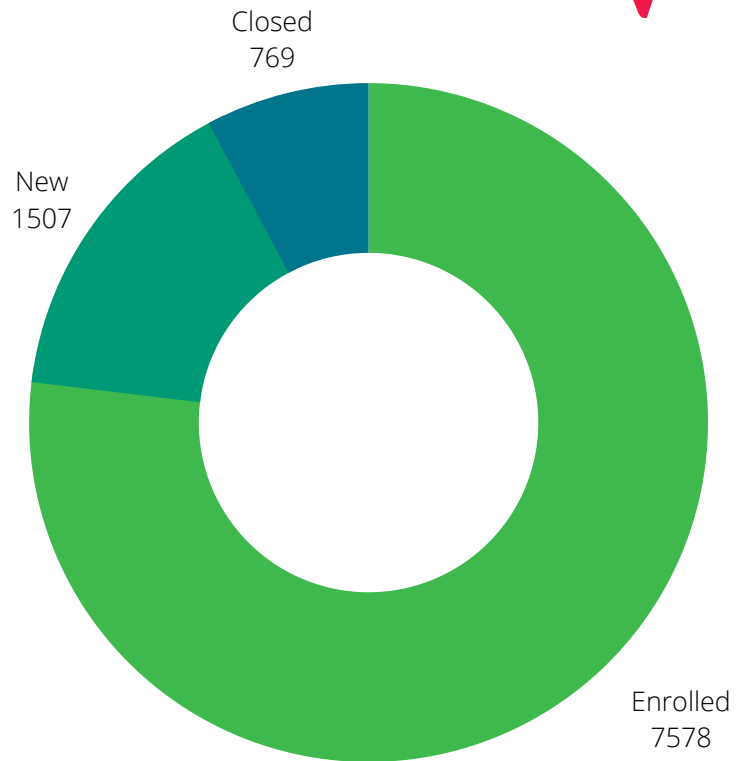
In FY21, the majority of our therapies were conducted through Telehealth

Telehealth

82.6%

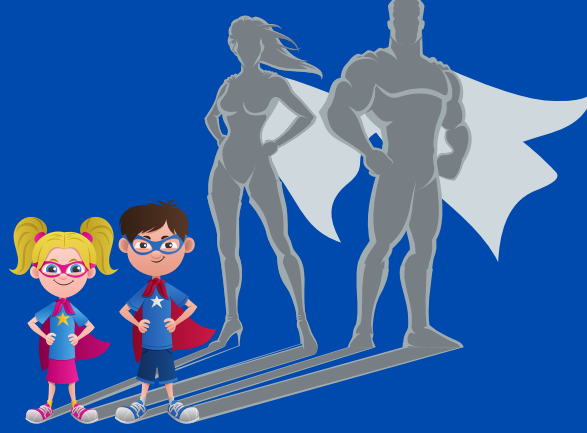
- Telehealth or Hybrid: 6259
- In-person (only): 1067

Service Delivery Method



ECI Enrollment Numbers





COMMUNITY RESOURCE CENTER (CRC)

The purpose of the Community Resource Center is to improve the capacity of the community to help children with special needs by providing education, empowerment opportunities, support services, and community awareness.

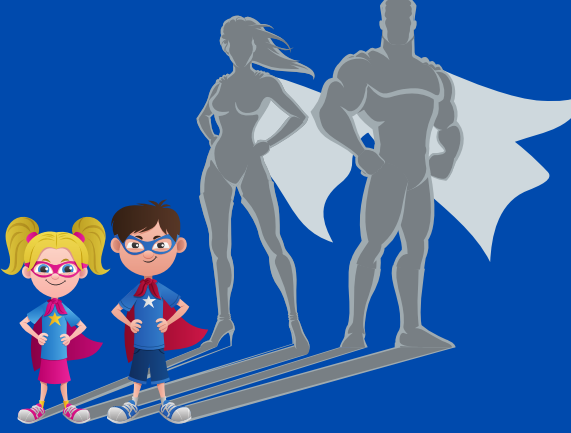
Goals

- Provide family support & community resources that support families in their caregiving roles.
- Promote the inclusion of children with special needs and their families in the El Paso community.
- Support, guide, and advise families
- Ensure accessibility & cultural sensitivity
- Facilitate collaboration between parents, youth, and agencies

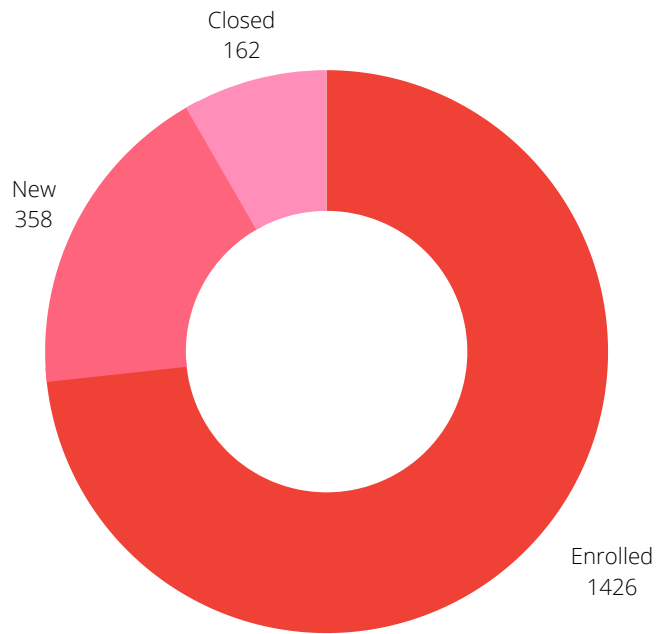


CRC Services Available

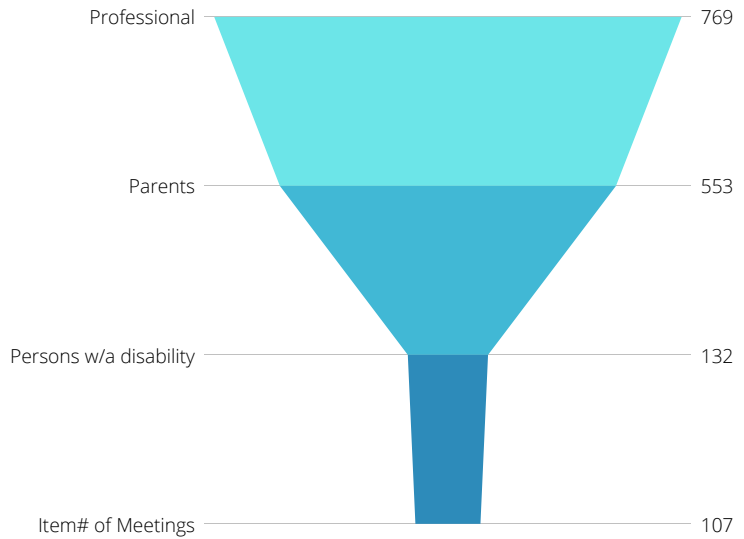
- Incredible Years - Group Parenting Classes
- Leadership & Advocacy Institute
- Sibling Workshops
- Respite
- Assistive Technology
- Information & Referral
- Case Management
- Leadership Academies
- Developmental Disabilities Policy Fellow



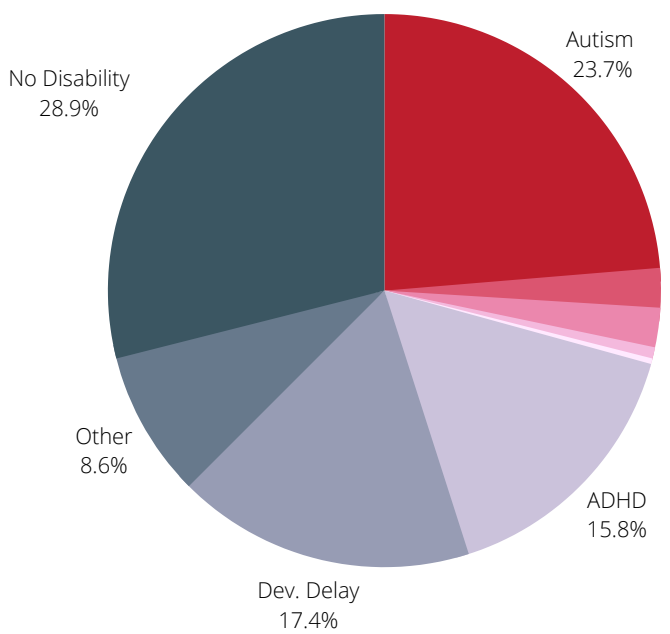
COMMUNITY RESOURCE CENTER (CRC)



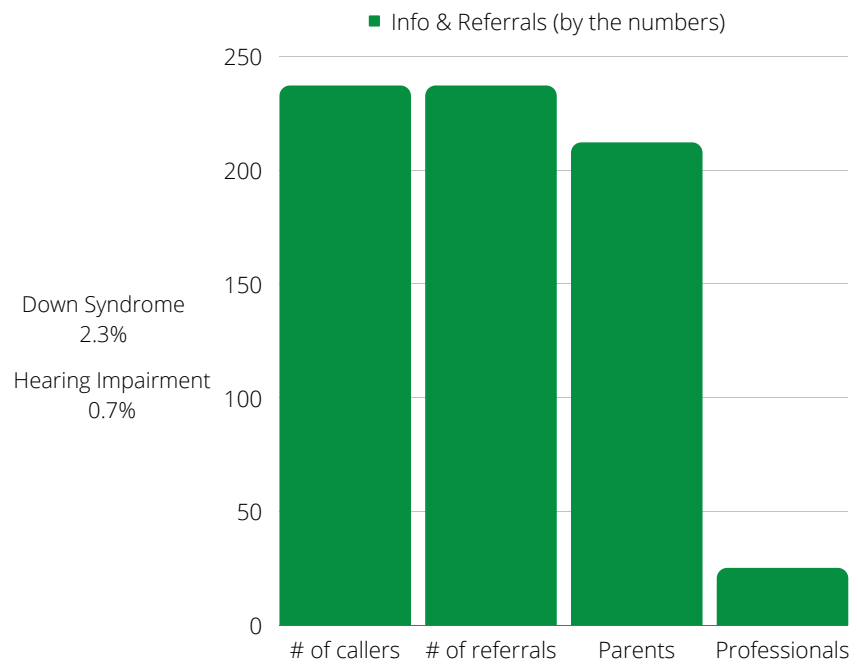
CRC Enrollment Numbers



Leadership & Advocacy, Academies, Trainings, & Workshops



Disability Status



Referral Information

INCLUSIVE EARLY LEARNING CENTER (IELC)



PdN Children's Inclusive Early Learning Center (IELC) is a learning center operation licensed by Texas Health & Human Services (HHS) and accredited with a Maximum Four Star rating by Texas Rising Star (TRS). The IELC serves all children, with or without disability, in an inclusive environment. We believe that all children benefit from interactions with others who are different from themselves. Through working and playing in a setting in which each child is valued for his or her strengths, children learn to value different ideas, cultures, and people regardless of their abilities.

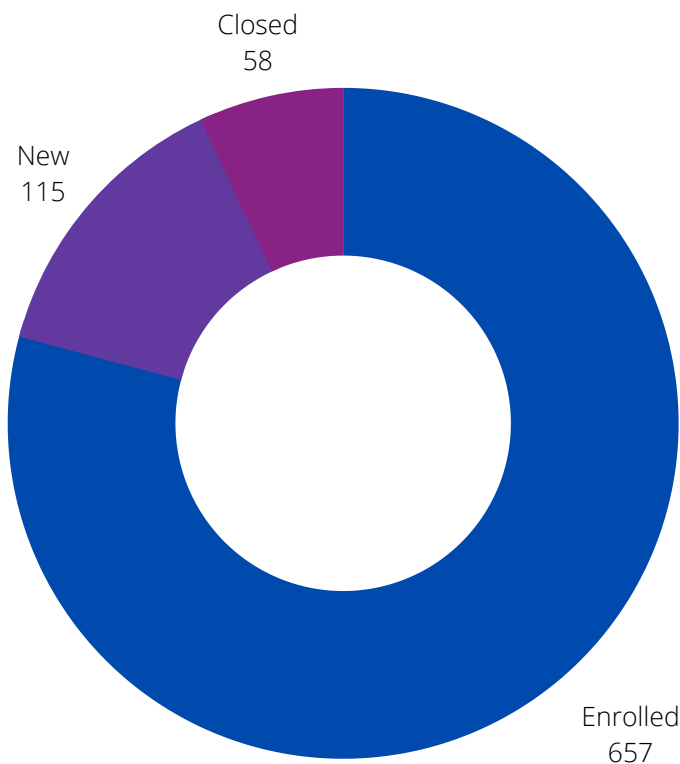
Our program provides many opportunities for social-emotional, cognitive, physical, and language growth. IELC teachers are dedicated to providing our children with the best quality care and presenting them with fun ways of learning that target all kinds of learners. Our curriculum is designed to help your child master developmental skills while using hands-on activities and learning through play.

Who We Serve

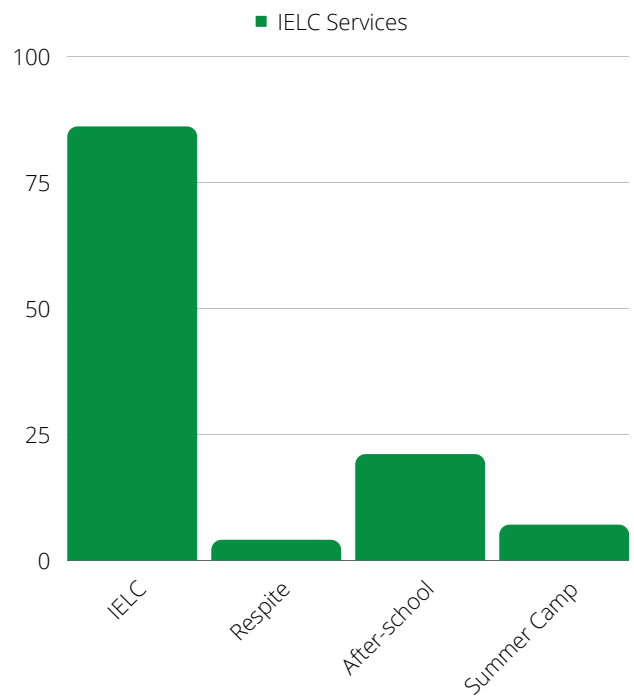
- Infants (2-17 months)
- Toddlers (18-36 months)
- Pre-School (3-year-olds)
- Pre-K (4-year-olds)
- School Aged Programs (5-13 years)



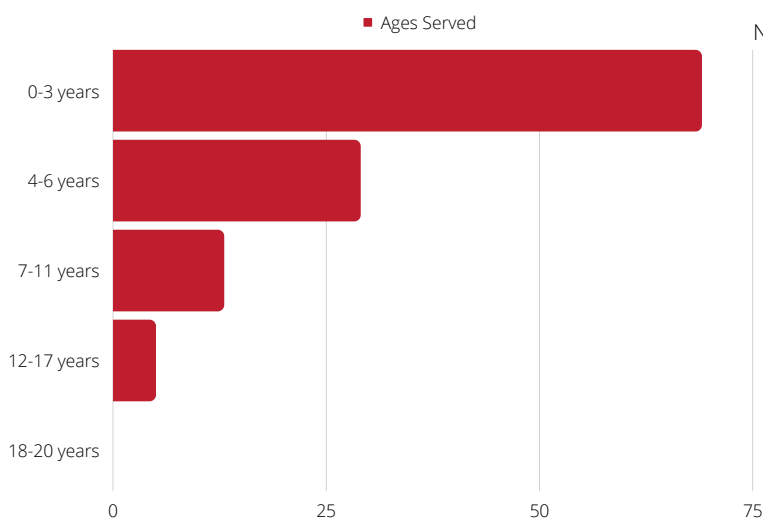
INCLUSIVE EARLY LEARNING CENTER (IELC)



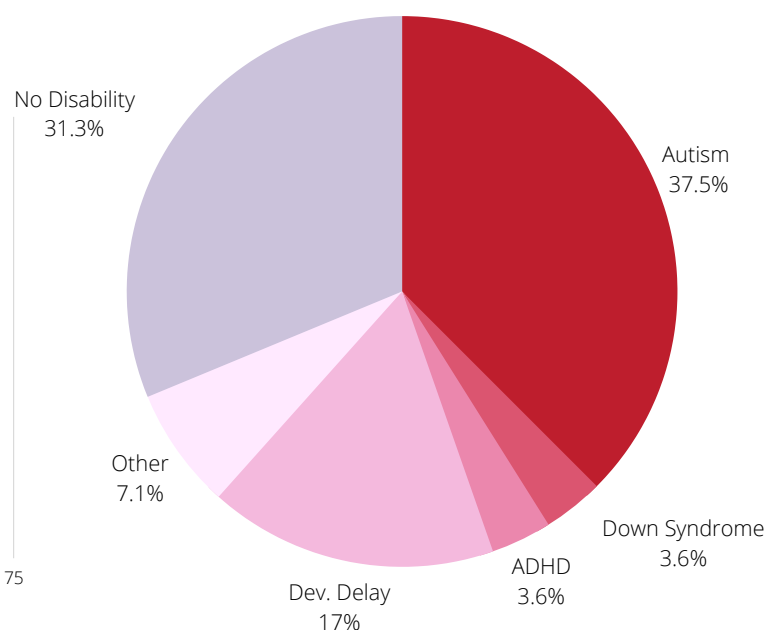
IELC Enrollment Numbers



IELC Services



Ages Served



Disability Status

APPLIED BEHAVIORAL ANALYSIS (ABA)



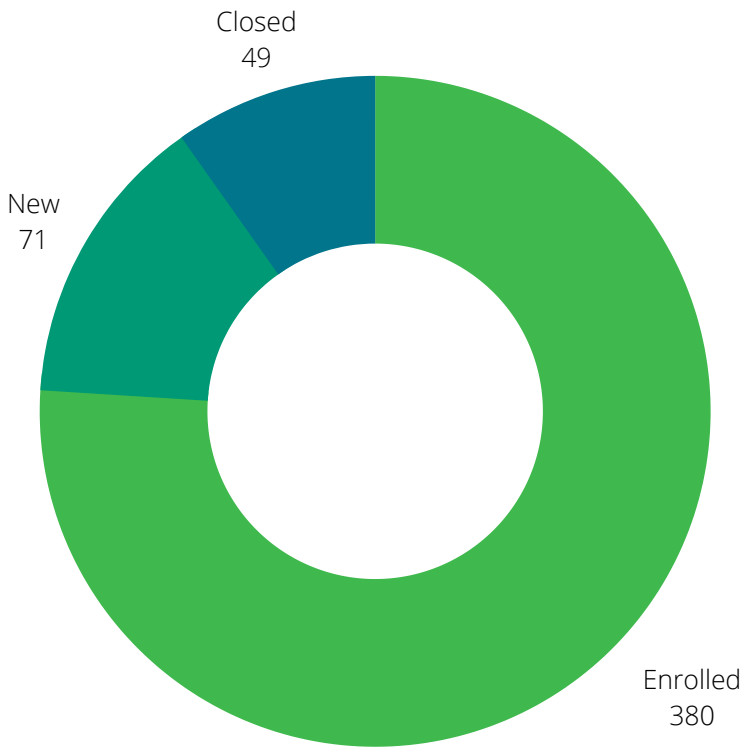
Applied behavior analysis (ABA) is a widely recognized Evidence-Based Treatment approach for Autism. ABA therapy systematically involves interventions that use the principles of learning and motivation to bring about positive behavior change. ABA provides highly individualized programming to address the child's needs. ABA therapy focuses on increasing age-appropriate, adaptive behaviors in children with Autism and other developmental delays.

ABA Services Available

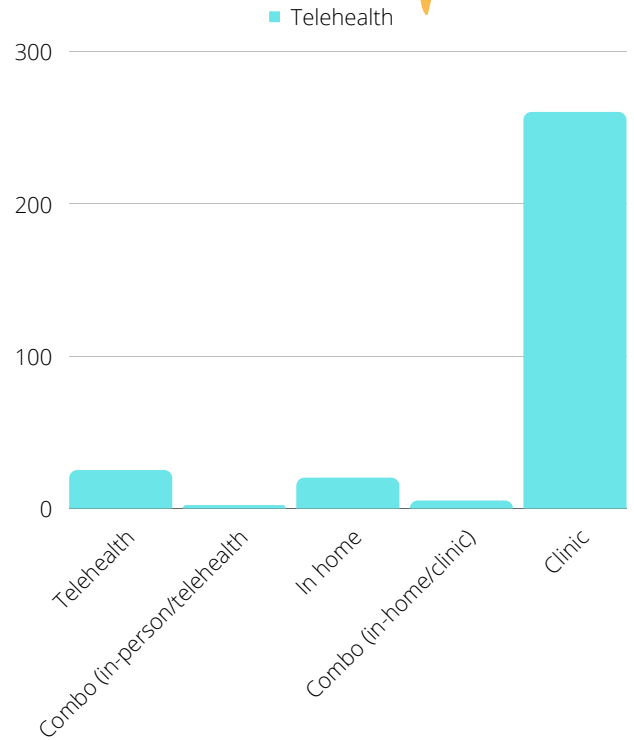
- Functional Behavior assessment
- Language assessments
- Preference assessments
- Treatment planning
- Parent and family training
- Adaptive skill programming
- Behavior reduction interventions
- Social skills training
- Peer-model programs
- Self-management training
- School and IEP consultation



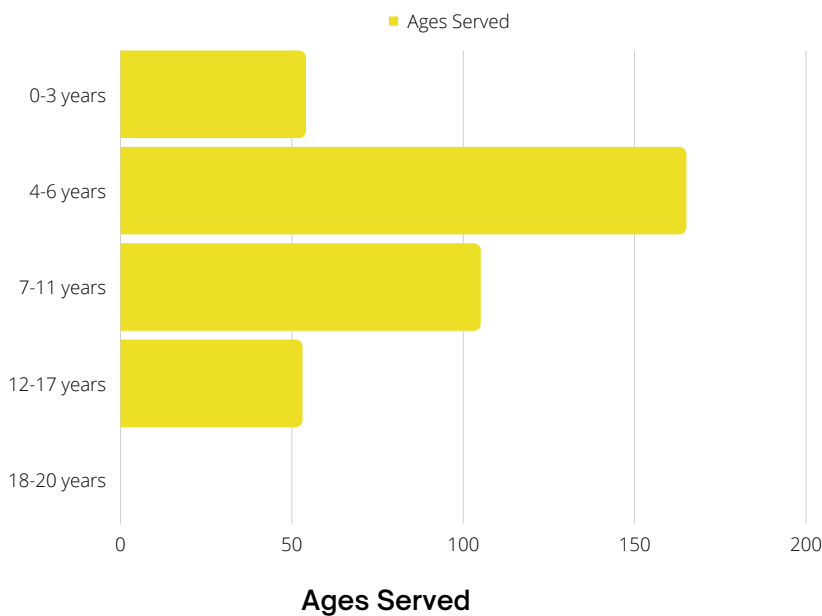
APPLIED BEHAVIORAL ANALYSIS (ABA)



ABA Enrollment Numbers



Service Delivery Method



Ages Served



PEDIATRIC THERAPY



Therapies Available

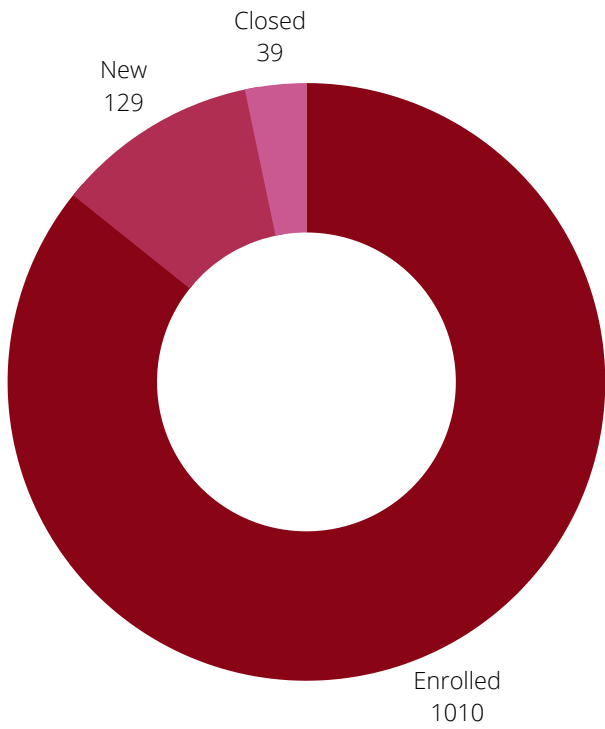
- Speech-Language Therapy
- Auditory-Verbal Therapy
- Occupational Therapy
- Feeding Clinic



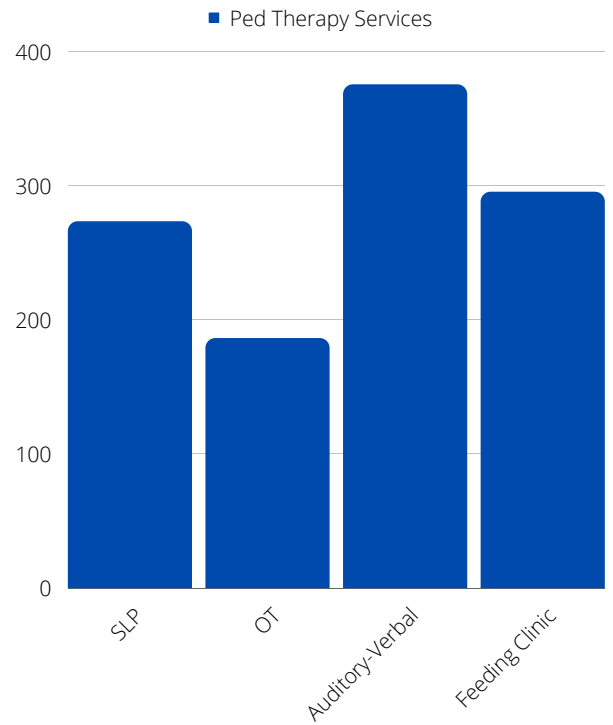
The Pediatric Therapy Department was established in 2016. The department provides needed therapies for children with special needs that were ineligible or no longer eligible for treatment under the Early Childhood Intervention (ECI) Program due to ECI age requirements.



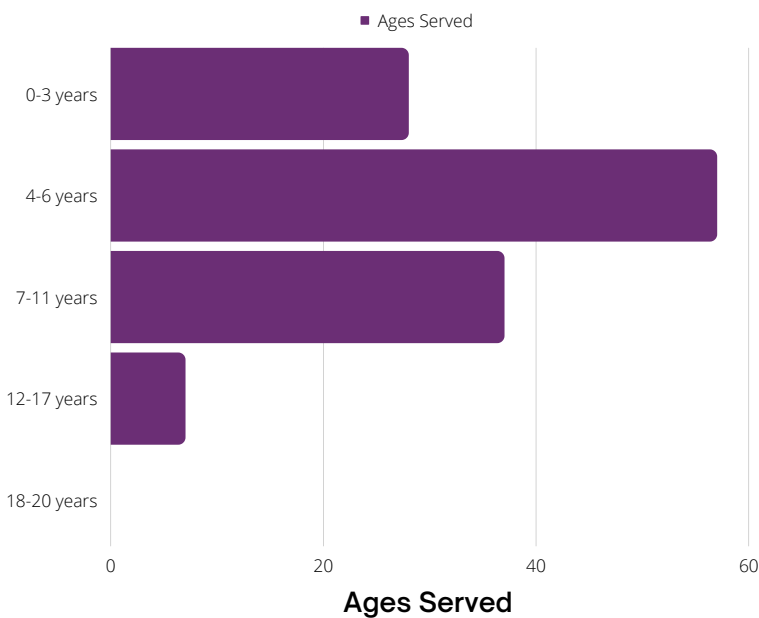
PEDIATRIC THERAPY



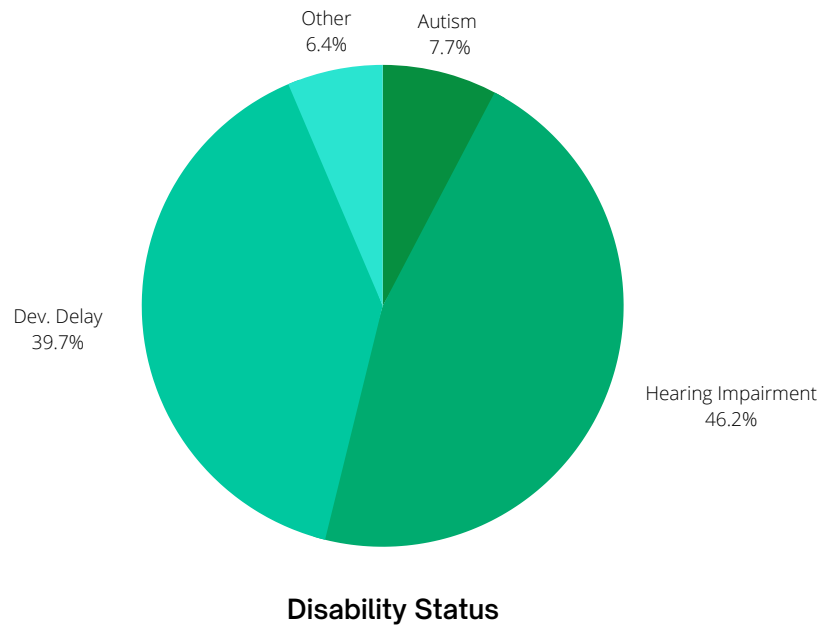
Pediatric Therapy Enrollment Numbers



Pediatric Therapy Services



Ages Served



Disability Status

REVENUES & EXPENSES



Consolidated Statement of
Financial Position (Million Usd)

August 31, 2021

ASSETS	Total
Cash & cash equivalents	5,496,297
Investments held in Foundation	1,909,713
Client accounts receivable	152,160
Grants Receivable	886,070
Pledges Receivable	68,000
Prepaid Expenses	19,675
Total Current assets	8,531,915
Property & equipment, net	505,859
Total assets	9,037,774

August 31, 2021

LIABILITIES AND NET ASSETS	Total
Accounts payable	158,053
Accrued Expenses	722,196
Deferred revenue	311,319
Total Current liabilities	1,191,568
Total liabilities	1,191,598
Net Assets:	
Without donor restrictions	4,955,214
With donor restrictions	2,890,992
Total net assets	7,846,206
Total liabilities and net assets	9,037,774



FY21 FINANCIAL STATEMENT



Revenues & Support	Total (\$)
Client fees, net	3,375,100
State grants	2,174,542
Federal grants	1,804,977
Forgiveness of debt	1,160,700
Registration fees	234,300
Other grants	197,817
Contributions	104,846
Interest & dividends, net	52,009
United Way contributions	39,868
Special events & fundraising	28,866
In-kind contributions	7,163
Rental income	1,500
Other income	61,895
Total revenues & support	9,243,583

Expenses	Total (\$)
Program services	6,847,705
General & administrative	1,083,805
Fundraising	88,052
Total expenses	8,019,562
Change in net assets	1,224,021*
Net assets, beginning of year	4,684,657
Net assets, end of year	5,908,678

*Due to receiving Federal PPP funds.



GRANTS & FOUNDATIONS



PdN Children's is generously funded through Federal, State, and Private Foundation dollars.

Grantors (public & private)



- Texas Health & Human Services Commission (HHSC) - Early Childhood Intervention (ECI) Program
- Texas HHSC- Autism Program
- Paso del Norte Health Foundation - HEAL Initiative
- Texas Council for Developmental Disabilities (TCDD) - Developmental Disability Policy Fellowship Program
- Texas Dept. of State Health Services (DSHS)
- HOPES Program - DFPS PEI
- Child Care Subsidy Program (CCS)
- El Paso Community Foundation
- Keating Fund
- Zanker Fund
- Autism Speaks
- United Way Community Impact
- Salesforce

CHRISTMAS STREET



In 2020, PdN Children's took over control of the Christmas Street Auxiliary. This auxiliary has been in existence since 1974. We are thankful to the auxiliary's board, volunteers and supporters over the years for their service to PdN and the families that we serve after all these years.

Due to the pandemic, we were forced to cancel our Annual Gala, for the first time since its inception. We did however commence with our Presales trees.

Since 1974, Christmas Street has provided beautiful designer Christmas trees for donors to display at their homes or business.

Christmas Street has been considered the unofficial kickoff to the holiday season!



**# of trees sold
in 2020:
30 Trees
Total:
\$32,206.70**

To reserve your own tree for you home or business please visit:

<http://www.christmasstreet.org>

SWING FOR CHILDREN WITH SPECIAL NEEDS @TOPGOLF



THANK YOU TO OUR DONORS OF CHRISTMAS ST. AND OUR TOPGOLF FUNDRAISER



Aztec Contractors
Britt Porter (True North
Advisors, LLC)
Diversified Interiors
Dr. Monica Ramirez (Buena
Vista Eye Care)
Dr. Rana Kronfol (El Paso
Pediatric Associates)
El Paso Electric
Frank Spencer & Associates
Gordon, Davis, Johnson, &
Shane, P.C.
Groove Therapy Foundation
Home Pros Real Estate Group
Houghton Financial
HUB International
Hunt Companies
Incite Consultancy
Josh & Tita Hunt
Judy Robison
Kemp Smith
Lauterbach & Borschow
LD Supply Company, Inc.


Leslie Hardaway
Lizzie Dipp Metzger (Crown Wealth
Strategies)
Marathon Petroleum
Marian Mexico
Mattress Firm
Mayor Dee Margo
MIMCO Properties
Monica Vargas-Mahar
NewTex Insurance
Noelle & Justin Lowenfield
Sally & Greg Deitch
Sierra Machinery
Streamline Home Loans
Tailor Made Personal Training
Texas Gas Services
The Hospitals of Providence - East
The Hospitals of Providence -
Transmountain
Trella V. Driggers (Century 21 APD
Associate)
Whitfield Properties

THANK YOU

Helping children with special needs meet their fullest potential since 1948.

 Telephone
(915) 544-8484

 Address
1101 E. Schuster Ave, El Paso, Texas 79902

 Website
www.pdnchildrens.org

 Social Media
@pdnchildrens

